

Z40

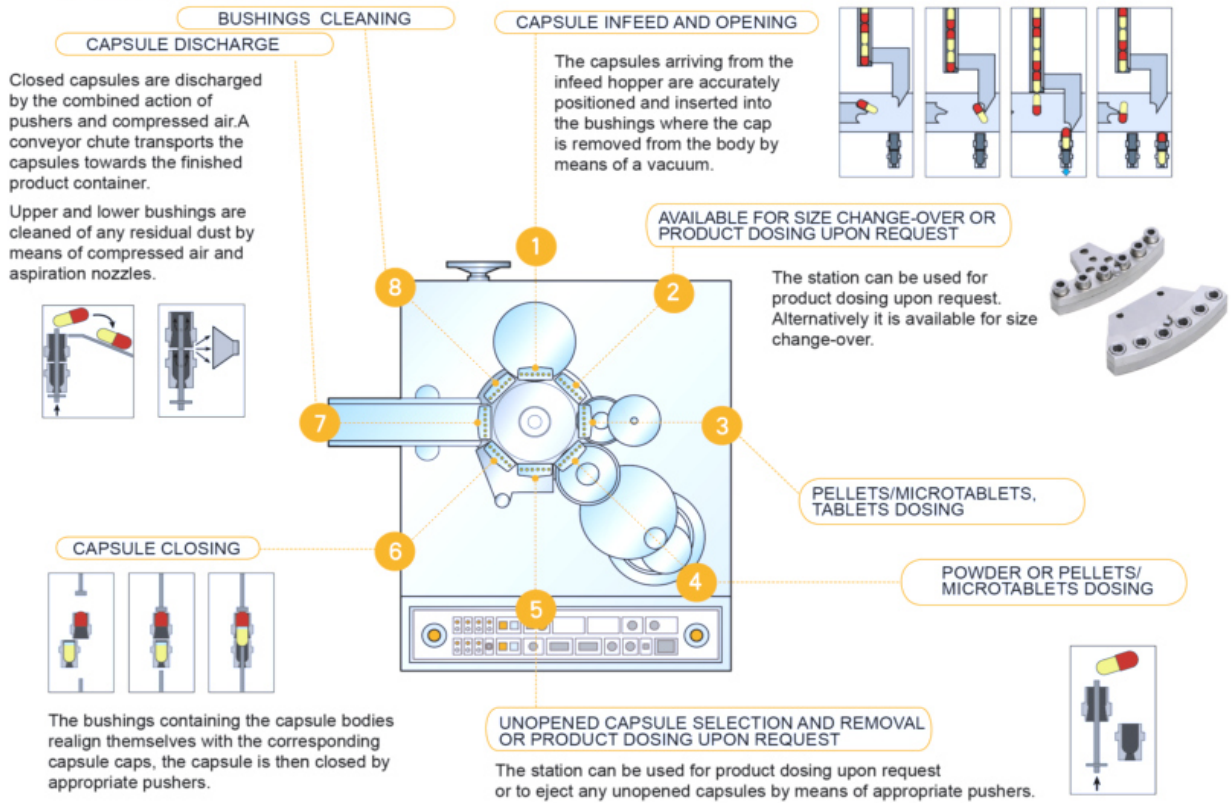
Capsule Filling Machine



General Description:

Z40 series intermittent capsule filling machine, the maximum output upto 40,000 capsules/hour, can meet different production requirements at low speed or medium speed. Z series capsule filling machine are totally made in China and the same with ZANASI SERIES. Easy access to the working area, fast and easy size changeover, quick and easy clean operation, the work parameter can be adjusted respectively or overall, greatly satisfy the production process requirements, upto the perfect dosing and filling speed. User friendly, no skilled operator required.

Z40E WORKING CYCLE



Technical Specifications	Z25	Z40
Maximum output(capsules/H)	25,000	40,000
Number of capsules per cycle	4	6
Capsule sizes	000L-5,SUPRO A-E,D-B,DBAA	
Maximum installed power(Kw)	10	
Standard voltage	230-400V 50-60Hz	
Aspiration	3,850 L/MIN 2,500mm H ₂ O	
Compressed air(l/min)	50-60bar	100-6bar
Vacuum	100-20bar	
Weight(Kg)	1,000	
Closed size(L*W*H mm)	960*1216*1800	
Opened size(L*W*H mm)	2650*2650*1800	